

One sensor, unlimited ideas

Standalone MEMS accelerometer with excellent durability

1-axis accelerometer GF1





AGF10711



AGF11311

FEATURES

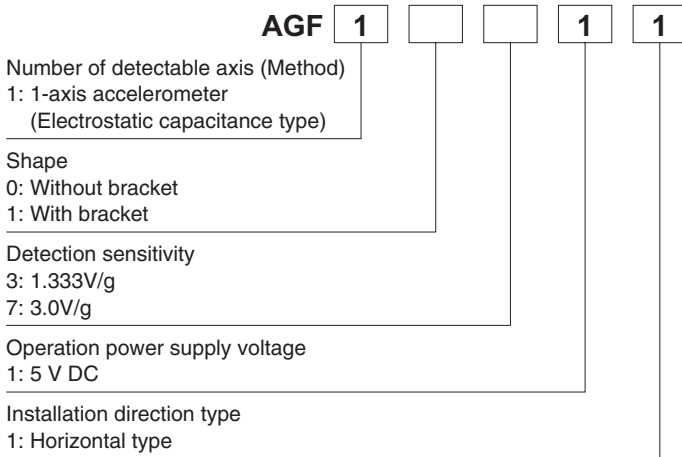
- **High reliability:** superior offset voltage temperature characteristics (33 mg (typ.))
- **Fast response:** 100 m/s
- **Compact size:** 58×36.5×33mm 2.283×1.437×1.299inch (without bracket)

APPLICATIONS

- **Inclination detection** (for improved safety and operability) in agricultural machine, construction machine and mobility vehicles
- **Photovoltaic station power plant:** Solar tracking for panels
- **Automotive:** 4WD ABS control and idling stop system

Compliance with RoHS Directive

ORDERING INFORMATION



PRODUCT TYPES

Product name	Operation power supply voltage	Acceleration detection range	Detection sensitivity	Part number
1-axis accelerometer GF1	5V DC	±0.5g	3.0V/g	AGF10711
		±1.2g	1.333V/g	AGF11311

Note: Carton: 80 pcs. (with bracket), Case: 150 pcs. (without bracket)

MAXIMUM RATING

Item	Unit	Standard value			Remarks
		min.	typ.	max.	
Maximum allowable voltage	V	-0.3	—	7	Ta=20°C 68°F
Maximum applied acceleration	m/s ² (g)	—	—	49 (5)	
		—	—	147 (15)	
Storage temperature range	°C °F	-30 -22	—	85 185	
Operation temperature range	°C °F	-30 -22	—	85 185	
Anti-shock characteristic	m/s ² (g)	—	—	49,000 (5,000)	
Grade of protection		IP67			

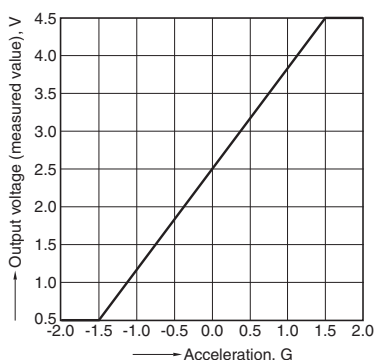
ELECTRICAL CHARACTERISTICS

Item	Unit	Standard value						Remarks
		min.		typ.		max.		
		AGF10711	AGF11311	AGF10711	AGF11311	AGF10711	AGF11311	
Acceleration detection range*1	m/s ² (g)	-4.9 (-0.5)	-11.76 (-1.2)	—		4.9 (0.5)	11.76 (1.2)	
Operation power supply voltage	V	4.75		5		5.25		-30 to +85°C -22 to +185°F
Current consumption	mA	—		—		10		0g, Ta=20°C 68°F
Sensitivity	mV/(m/s ²) (mV/g)	297 (2910)	132 (1293)	306 (3000)	136 (1333)	315 (3090)	140 (1373)	-30 to +85°C -22 to +185°F
Offset voltage (0 g)	V	2.4		2.5		2.6		Ta=20°C 68°F
Offset voltage temperature characteristic	V (mg)	-0.21 (-70)	-0.093 (-70)	—		0.21 (70)	0.093 (70)	-30 to +85°C -22 to +185°F
Other axis sensitivity	%	-5		—		5		Ta=20°C 68°F
Non-linearity*2	%FS	-1		—		1		Ta=20°C 68°F
Turn-on time	ms	—		10		—		0g, Ta=20°C 68°F
Frequency response	Hz	DC		15		—		-3dB point
Clamping voltage VH	V	4.4		4.5		4.6		
Clamping voltage VL	V	0.4		0.5		0.6		

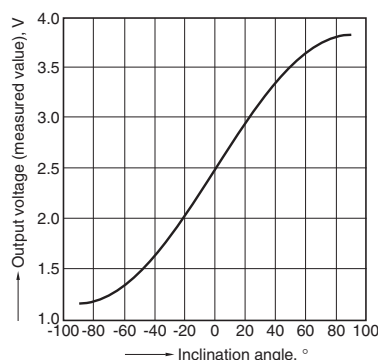
Notes: 1. The acceleration unit "g" means 9.8 m/s².
 2. Maximum error from linear output that connects +1.2 g and -1.2 g output. (AGF11311)
 Maximum error from linear output that connects +0.5 g and -0.5 g output. (AGF10711)

REFERENCE DATA

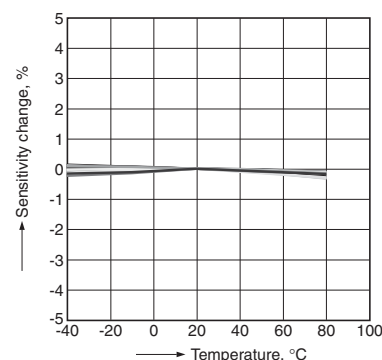
1. Output characteristics



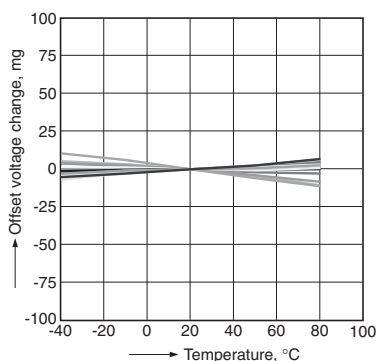
2. Inclination angle - Output voltage characteristics



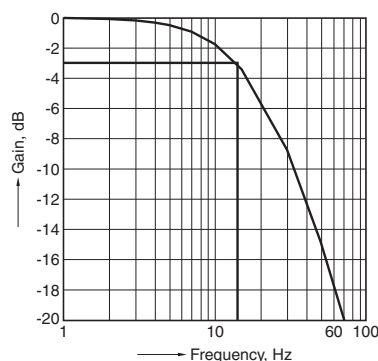
3. Sensitivity temperature characteristics



4. Offset voltage temperature characteristics



5. Frequency characteristics



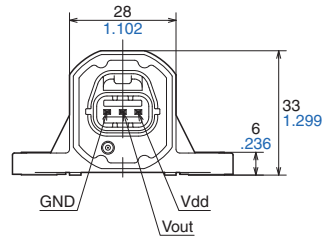
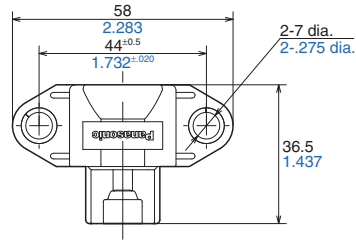
AGF1

DIMENSIONS (mm inch)

The CAD data of the products with a **CAD Data** mark can be downloaded from: <http://panasonic-electric-works.net/ac>

Without bracket (AGF10711)

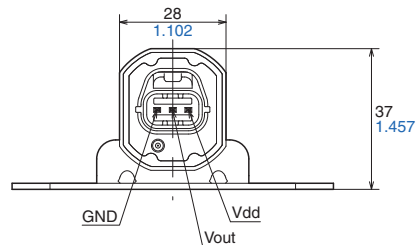
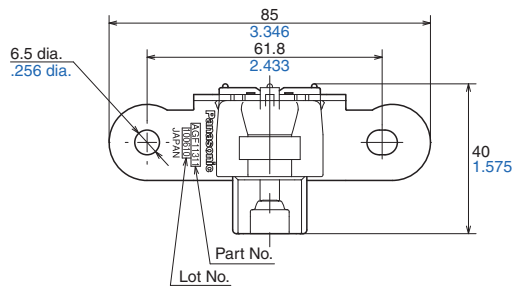
CAD Data



Connector:
Manufacturing company: Yazaki Corporation
Housing: 7283-8730-30

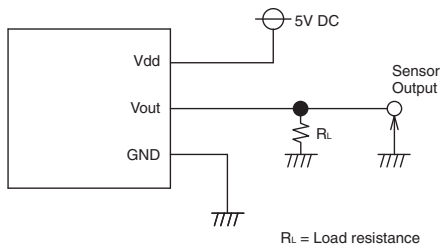
With bracket (AGF11311)

CAD Data



Connector:
Manufacturing company: Yazaki Corporation
Housing: 7283-8730-30

WIRING DIAGRAM



NOTES

1. To ensure reliability, please verify quality under conditions of actual use

2. Connections

- Please perform connections correctly in accordance with the terminal connection diagram. In particular, be careful not to reverse wire the power supply as this will cause damage or degrade to the product.

3. Cleaning

- Avoid ultrasonic cleaning since this may cause breaks or disconnections in the wiring.

4. Environment

- Please avoid using or storing the sensor in a place exposed to corrosive gases (such as the gases given off by organic solvents, sulfurous acid gas, hydrogen sulfides, etc.) which will adversely affect the performance of the sensor.

- Since the internal circuitry may be destroyed if an external surge voltage is supplied, provide an element which will absorb the surges.

- Malfunctioning may occur if the product is in the vicinity of electrical noise such as that from static electricity, lightning, a broadcasting station, an amateur radio, or a mobile phone.

- Avoid using the sensor in an environment where condensation may form. Furthermore, its output may fluctuate if any moisture adhering to it freezes.

- Avoid using the sensor where it will be susceptible to ultrasonic or other high-frequency vibration.

- Please do not use the sensor in a location subject to direct sunlight or in a location subject to a similar strong light source.

5. Other handling precautions

To assure reliability, check the sensor under actual loading conditions. Avoid any situation that may adversely affect its performance.

- Caution is required because differences in the acceleration detection range and the method of connection can lead to accidents.

- The actual acceleration should be within the rated acceleration range. Damage may occur if it is outside of this range.

- This product may become damaged if exposed to static electricity. Therefore, please be careful when handling.

North America

Europe

Asia Pacific

China

Japan

Panasonic Electric Works

Please contact our Global Sales Companies in:

Europe

▶ Headquarters	Panasonic Electric Works Europe AG	Rudolf-Diesel-Ring 2, 83607 Holzkirchen, Tel. +49 (0) 8024 648-0, Fax +49 (0) 8024 648-111, www.panasonic-electric-works.com
▶ Austria	Panasonic Electric Works Austria GmbH	Josef Madersperger Str. 2, 2362 Biedermannsdorf, Tel. +43 (0) 2236-26846, Fax +43 (0) 2236-46133 www.panasonic-electric-works.at
	PEW Electronic Materials Europe GmbH	Ennshafenstraße 30, 4470 Enns, Tel. +43 (0) 7223 883, Fax +43 (0) 7223 88333, www.panasonic-electronic-materials.com
▶ Benelux	Panasonic Electric Works Sales Western Europe B.V.	De Rijn 4, (Postbus 211), 5684 PJ Best, (5680 AE Best), Netherlands, Tel. +31 (0) 499 372727, Fax +31 (0) 499 372185, www.panasonic-electric-works.nl
▶ Czech Republic	Panasonic Electric Works Czech s.r.o.	Průmyslová 1, 34815 Planá, Tel. (+420)-374 799 990, Fax (+420)-374 799 999, www.panasonic-electric-works.cz
▶ France	Panasonic Electric Works Sales Western Europe B.V.	Succursale française, 10, rue des petits ruisseaux, 91370 Verrières Le Buisson, Tél. +33 (0) 1 6013 5757, Fax +33 (0) 1 6013 5758, www.panasonic-electric-works.fr
▶ Germany	Panasonic Electric Works Europe AG	Rudolf-Diesel-Ring 2, 83607 Holzkirchen, Tel. +49 (0) 8024 648-0, Fax +49 (0) 8024 648-111, www.panasonic-electric-works.de
▶ Hungary	Panasonic Electric Works Europe AG	Erdőalja út 91/a, 1037 Budapest, Tel. +36 (0) 20 9715688, www.panasonic-electric-works.hu
▶ Ireland	Panasonic Electric Works UK Ltd.	Dublin, Tel. +353 (0) 14600969, Fax +353 (0) 14601131, www.panasonic-electric-works.co.uk
▶ Italy	Panasonic Electric Works Italia srl	Via del Commercio 3-5 (Z.I. Ferlina), 37012 Bussolengo (VR), Tel. +39 (0) 456752711, Fax +39 (0) 456700444, www.panasonic-electric-works.it
▶ Nordic Countries	Panasonic Electric Works Nordic AB	Sjöängsvägen 10, 19272 Sollentuna, Sweden, Tel. +46 859476680, Fax +46 859476690, www.panasonic-electric-works.se
▶ Poland	Panasonic Electric Works Polska sp. z o.o.	Jungmansgatan 12, 21119 Malmö, Tel. +46 40 697 7000, Fax +46 40 697 7099, www.panasonic-fire-security.com
▶ Portugal	Panasonic Electric Works España S.A.	Al. Krakowska 4/6, 02-284 Warszawa, Tel. +48 (0) 22 338-11-33, Fax +48 (0) 22 338-12-00, www.panasonic-electric-works.pl
▶ Spain	Panasonic Electric Works España S.A.	Portuguese Branch Office, Avda Adelino Amaro da Costa 728 R/C J, 2750-277 Cascais, Tel. +351 214812520, Fax +351 214812529
▶ Switzerland	Panasonic Electric Works Schweiz AG	Barajas Park, San Severo 20, 28042 Madrid, Tel. +34 913293875, Fax +34 913292976, www.panasonic-electric-works.es
▶ United Kingdom	Panasonic Electric Works UK Ltd.	Grundstrasse 8, 6343 Rotkreuz, Tel. +41 (0) 41 7997050, Fax +41 (0) 41 7997055, www.panasonic-electric-works.ch Sunrise Parkway, Linford Wood, Milton Keynes, MK14 6 LF, Tel. +44 (0) 1908 231555, Fax +44 (0) 1908 231599, www.panasonic-electric-works.co.uk

North & South America

▶ USA	PEW Corporation of America	629 Central Avenue, New Providence, N.J. 07974, Tel. 1-908-464-3550, Fax 1-908-464-8513, www.pewa.panasonic.com
--------------	-----------------------------------	---

Asia Pacific / China / Japan

▶ China	Panasonic Electric Works (China) Co., Ltd.	Level 2, Tower W3, The Towers Oriental Plaza, No. 2, East Chang An Ave., Dong Cheng District, Beijing 100738, Tel. (010) 5925-5988, Fax (010) 5925-5973
▶ Hong Kong	Panasonic Electric Works (Hong Kong) Co., Ltd.	RM1205-9, 12/F, Tower 2, The Gateway, 25 Canton Road, Tsimshatsui, Kowloon, Hong Kong, Tel. (0852) 2956-3118, Fax (0852) 2956-0398
▶ Japan	Panasonic Electric Works Co., Ltd.	1048 Kadoma, Kadoma-shi, Osaka 571-8686, Japan, Tel. (06) 6908-1050, Fax (06) 6908-5781, http://panasonic-electric-works.net
▶ Singapore	Panasonic Electric Works Asia Pacific Pte. Ltd.	101 Thomson Road, #25-03/05, United Square, Singapore 307591, Tel. (06255) 5473, Fax (06253) 5689