

New



FEATURES

- Not only air, now water pressure can be detected directly.
*For other media, please inquire.
- Linear output achieved for both positive and negative pressure.
- Standalone type
One-touch connection using connector
- Low power consumption contributes to energy savings.

TYPICAL APPLICATIONS

- Water heaters (water level detection)
- Industrial water pressure monitoring

Compliance with RoHS Directive

ORDERING INFORMATION

ADPW 1 1

PS-A Direct water pressure detection type

Shape

1: Standalone type

Installation hole: 4.5mm dia., 40mm pitch

Pipe shape: 6mm dia., No O-ring groove

Compatible plug: XMP-04V

Rated pressure

1: Negative pressure -19.6kPa

Positive pressure 49.0kPa

* Please inquire about pressure ranges.

SPECIFICATIONS

1. Use conditions and Absolute maximum ratings

Item	ADPW11	Remarks
Type of pressure	Gauge pressure	
Pressure medium	Air and water	Note*1
Max. applied pressure	-90 to 350kPa	
Max. applied voltage	7.0 V	
Ambient temperature range	-10 to 80°C 14 to 176°F	
Storage temperature range	-20 to 85°C -4 to 185°F	

Note: *1. Please consult us for other pressure media.

PS-A (ADPW)

2. Electrical characteristics

Item	ADPW11	Remarks
Rated pressure	-19.6 to 49kPa	
	-2 to 5m	Converts to water level
Drive voltage	5.0±0.25V	
Power consumption	16mW (typ.)	Note*2 and *3
Offset voltage	2.0±0.06V	Note*2 and *3
Rated output voltage for positive pressure	4.5±0.12V	Note*2 and *3
Rated output voltage for negative pressure	1.0±0.084V	Note*2 and *3
Rated span voltage for positive pressure	2.5±0.06V	Note*2 and *3
Rated span voltage for negative pressure	1.0±0.024V	Note*2 and *3
Non linearity	±0.5%FS	Note*2, *3 and *5
Pressure hysteresis	±0.3%FS	Note*2, *3 and *5
Offset voltage temperature characteristics	30mV	Note*3 and *4
Sensitivity temperature characteristics	±2.0%FS	Note*3, *4 and *5
Output impedance	15Ω (typ.)	Note*2

Notes: *2. Indicates output when temperature is 25°C 77°F.

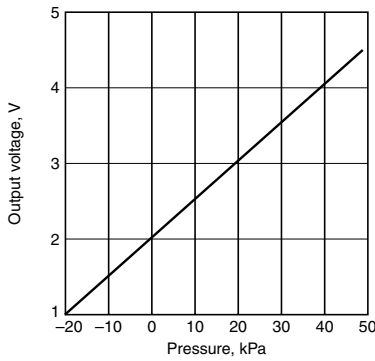
*3. Indicates output when drive voltage is 5 V. Although output fluctuates due to fluctuations in the drive voltage, this is not included.

*4. Indicates from output value at 25°C 77°F and the change of output at 0 and 50°C 32 to 122°F.

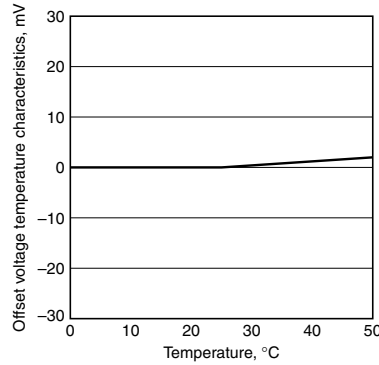
*5. Full scale (FS) indicates 0 to 49 kPa.

DATA

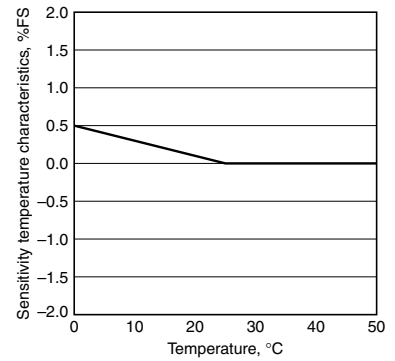
1.-(1) Output characteristics



1.-(2) Offset voltage temperature characteristics



1.-(3) Sensitivity temperature characteristics

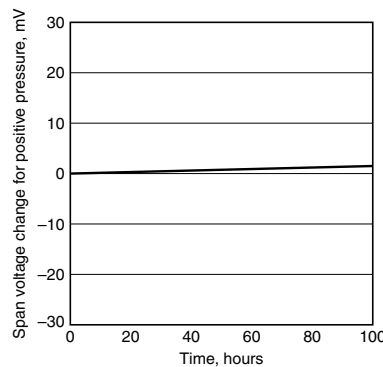
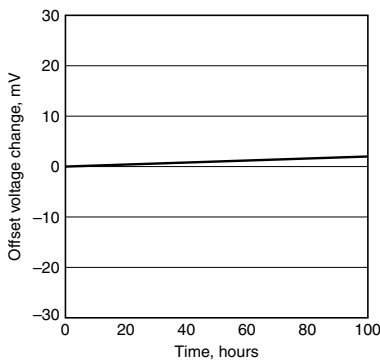


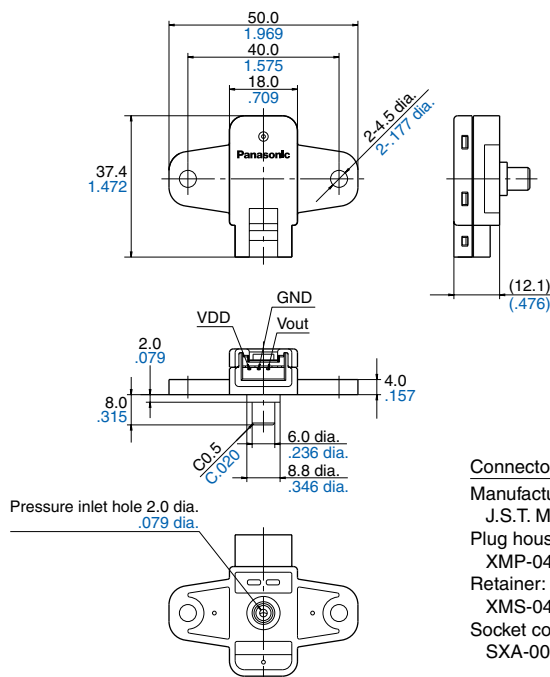
2. THB (high temperature high humidity bias test)

Within 85°C 185°F and 85% RH

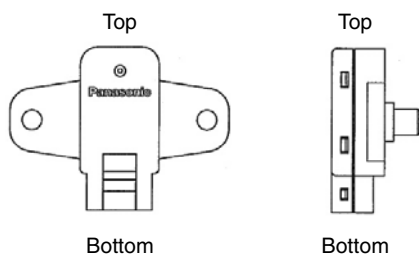
5 V applied between No. 2 (VDD) and No. 3 (GND)

Applied pressure: 0kPa



DIMENSIONS (mm inch)The CAD data of the products with a **CAD Data** mark can be downloaded from: <http://panasonic-electric-works.net/ac>**CAD Data****NOTES****Installation direction**

1) Influenced by the weight of the filled oil, the offset voltage will shift depending on the installation direction. This product should be installed in the recommended orientation shown below in order to achieve detection results it was designed for.



2) Air tightness may be compromised due to the case breaking or loosening if the screws are not tightened properly. Please make sure the proper torque is used when tightening the screws during sensor installation.

Environment

- 1) Please avoid using or storing the pressure sensor chip in a place exposed to corrosive gases (such as the gases given off by organic solvents, sulfurous acid gas, hydrogen sulfides, etc.) which will adversely affect the performance of the pressure sensor chip.
- 2) Avoid use in environments susceptible to condensation and freezing.
- 3) The connector on this product is not water proof. Please make sure there is no problem with the installation environment before installing.
- 4) When using with cable wiring, we recommend using shielded cables and keeping them as short as possible in order to prevent noise from leaking in.
- 5) Since the internal circuitry may be destroyed if an external surge voltages is supplied, provide an element which will absorb the surges.
- 6) Please note that noise entering the power supply may cause malfunction and breakdown.
- 7) Static electricity can damage this product. Please take sufficient cautions when handling.

Other handling precautions

- 1) Oil has been placed inside the pressure intake opening in order to protect the pressure sensor chip and sensor chip. Do not insert foreign objects, such as a needle, into the pressure intake opening. Doing so may cause damage to the sensor chip or cause oil to leak.
- 2) As a rule, please do not use this product if it has been dropped. If you still intend to use it, please verify functionality first.
- 3) Use an operating pressure which is within the rated pressure range. Using a pressure beyond this range may cause damage.
- 4) Avoid using the pressure sensor where it will be susceptible to ultrasonic or other high-frequency vibration.
- 5) To assure reliability, check the sensor under actual loading conditions. Avoid any situation that may adversely affect its performance.

North America

Europe

Asia Pacific

China

Japan

Panasonic Electric Works

Please contact our Global Sales Companies in:

Europe

▶ Headquarters	Panasonic Electric Works Europe AG	Rudolf-Diesel-Ring 2, 83607 Holzkirchen, Tel. +49 (0) 8024 648-0, Fax +49 (0) 8024 648-111, www.panasonic-electric-works.com
▶ Austria	Panasonic Electric Works Austria GmbH	Josef Madersperger Str. 2, 2362 Biedermannsdorf, Tel. +43 (0) 2236-26846, Fax +43 (0) 2236-46133 www.panasonic-electric-works.at
	PEW Electronic Materials Europe GmbH	Ennshafenstraße 30, 4470 Enns, Tel. +43 (0) 7223 883, Fax +43 (0) 7223 88333, www.panasonic-electronic-materials.com
▶ Benelux	Panasonic Electric Works Sales Western Europe B.V.	De Rijn 4, (Postbus 211), 5684 PJ Best, (5680 AE Best), Netherlands, Tel. +31 (0) 499 372727, Fax +31 (0) 499 372185, www.panasonic-electric-works.nl
▶ Czech Republic	Panasonic Electric Works Czech s.r.o.	Prumyslová 1, 34815 Planá, Tel. (+420)-374 799 990, Fax (+420)-374 799 999, www.panasonic-electric-works.cz
▶ France	Panasonic Electric Works Sales Western Europe B.V.	Succursale française, 10, rue des petits ruisseaux, 91370 Verrières Le Buisson, Tél. +33 (0) 1 6013 5757, Fax +33 (0) 1 6013 5758, www.panasonic-electric-works.fr
▶ Germany	Panasonic Electric Works Europe AG	Rudolf-Diesel-Ring 2, 83607 Holzkirchen, Tel. +49 (0) 8024 648-0, Fax +49 (0) 8024 648-111, www.panasonic-electric-works.de
▶ Hungary	Panasonic Electric Works Europe AG	Erdőalja út 91/a, 1037 Budapest, Tel. +36 (0) 20 9715688, www.panasonic-electric-works.hu
▶ Ireland	Panasonic Electric Works UK Ltd.	Dublin, Tel. +353 (0) 14600969, Fax +353 (0) 14601131, www.panasonic-electric-works.co.uk
▶ Italy	Panasonic Electric Works Italia srl	Via del Commercio 3-5 (Z.I. Ferlina), 37012 Bussolengo (VR), Tel. +39 (0) 456752711, Fax +39 (0) 456700444, www.panasonic-electric-works.it
▶ Nordic Countries	Panasonic Electric Works Nordic AB	Sjöängsvägen 10, 19272 Sollentuna, Sweden, Tel. +46 859476680, Fax +46 859476690, www.panasonic-electric-works.se
▶ Poland	Panasonic Electric Works Polska sp. z o.o	Jungmansgatan 12, 21119 Malmö, Tel. +46 40 697 7000, Fax +46 40 697 7099, www.panasonic-fire-security.com
▶ Portugal	Panasonic Electric Works España S.A.	Al. Krakowska 4/6, 02-284 Warszawa, Tel. +48 (0) 22 338-11-33, Fax +48 (0) 22 338-12-00, www.panasonic-electric-works.pl
▶ Spain	Panasonic Electric Works España S.A.	Portuguese Branch Office, Avda Adelino Amaro da Costa 728 R/C J, 2750-277 Cascais, Tel. +351 214812520, Fax +351 214812529
▶ Switzerland	Panasonic Electric Works Schweiz AG	Barajas Park, San Severo 20, 28042 Madrid, Tel. +34 913293875, Fax +34 913292976, www.panasonic-electric-works.es
▶ United Kingdom	Panasonic Electric Works UK Ltd.	Grundstrasse 8, 6343 Rotkreuz, Tel. +41 (0) 41 7997050, Fax +41 (0) 41 7997055, www.panasonic-electric-works.ch
		Sunrise Parkway, Linford Wood, Milton Keynes, MK14 6 LF, Tel. +44 (0) 1908 231555, Fax +44 (0) 1908 231599, www.panasonic-electric-works.co.uk

North & South America

▶ USA	PEW Corporation of America	629 Central Avenue, New Providence, N.J. 07974, Tel. 1-908-464-3550, Fax 1-908-464-8513, www.pewa.panasonic.com
--------------	-----------------------------------	---

Asia Pacific/China/Japan

▶ China	Panasonic Electric Works (China) Co., Ltd.	Level 2, Tower W3, The Towers Oriental Plaza, No. 2, East Chang An Ave., Dong Cheng District, Beijing 100738, Tel. (010) 5925-5988, Fax (010) 5925-5973
▶ Hong Kong	Panasonic Electric Works (Hong Kong) Co., Ltd.	RM1205-9, 12/F, Tower 2, The Gateway, 25 Canton Road, Tsimshatsui, Kowloon, Hong Kong, Tel. (0852) 2956-3118, Fax (0852) 2956-0398
▶ Japan	Panasonic Electric Works Co., Ltd.	1048 Kadoma, Kadoma-shi, Osaka 571-8686, Japan, Tel. (06) 6908-1050, Fax (06) 6908-5781, http://panasonic-electric-works.net
▶ Singapore	Panasonic Electric Works Asia Pacific Pte. Ltd.	101 Thomson Road, #25-03/05, United Square, Singapore 307591, Tel. (06255) 5473, Fax (06253) 5689