

NOTE:

1. ALL OF BURRS MUST BE FULLY REMOVED
2. REMOVE ALL OF DUST, DIRT, IOL... THEY ARE NOT SPECIFIED
3. ALL IF CORNERS NOT BE SPECIFIED ARE 0.3MM
4. ANY MTERIALS TO BE USED FOR THIS PART COMPLY WITH MPT GREEN PROCUREMENT STANDARD BASED ON EHS-3-42

Ⓢ TOLERANCE:  
UNLESS OTHERWISE SPECIFIED

0-6	±0.1
>6-25	±0.15
>25-80	±0.2
>80-180	±0.3
>180-315	±0.6
>315-	±1.0
ANGLE	±0.5

Ⓢ PART NUMBER AND DATECODE ARE PRINTED APPROXIMATELY WHERE SHOWN

ITEM	P/N	DISCRPTION	Q'TY
1	334C887501A	WIRECLIP	1
2	335I817301A	HEATSINK	1
3	333C887501A	PAD	1

REVISIONS		BY	DATE
REV	DESCRIPTION	JOJO	11/18/05
A00	RELEASE	JOJO	07/06/06

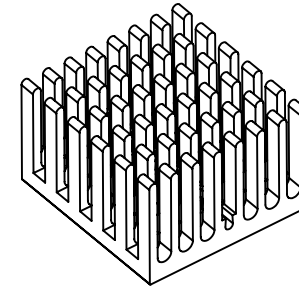
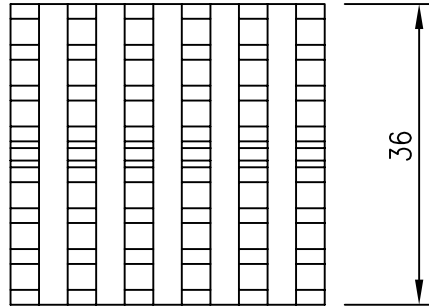
Switch heatsink dimensions (Drawing zone D7 and E6)

RELEASE  
正式發行圖面 REV:A01  
ENG. APPR

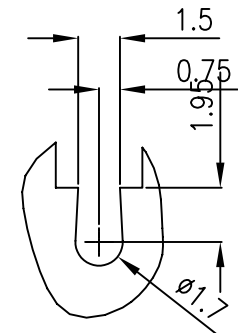
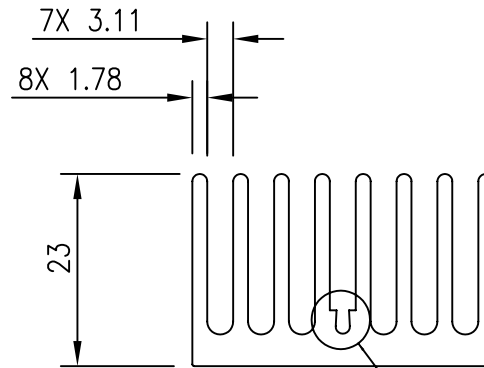
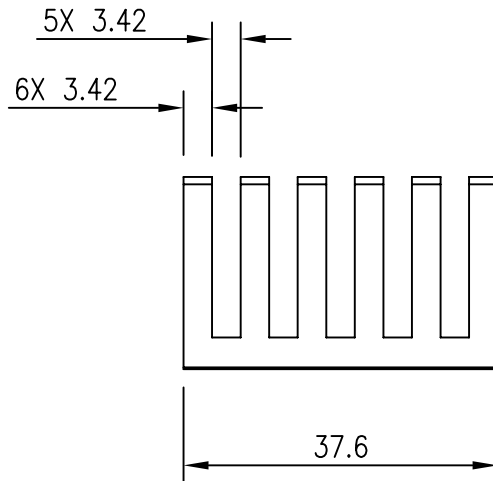
MATERIAL	超眾科技股份有限公司 CHAUN-CHOUNG TECHNOLOGY CORP.	MODEL NO.
SURFACE FINISH		PART NO. 00C887501A
TOLERANCES UNLESS NOTED	SI Metric A3 THIRD ANGLE PROJECTION 	DWG. NO.
LINEAR ±		TITLE
ANGLES ±	SCALE 1/1 SHEET 1 OF 1	TANK CHIPSET ASSY
		DESIGNER
		JOJO
		07/06/06
		CHECKED
		P.C
		07/06/06

NOTES: (UNLESS OTHERWISE SPECIFIED):

1. INTERPRET DIMENSIONS PER ANSI Y14.5M-1982.
2. ALL DIMENSIONS, UNLESS OTHERWISE NOTED, ARE CRITICAL DIMENSIONS AND SHALL BE CHECKED FOR CONFORMITY DURING FIRST ARTICLE INSPECTION.
  - ② INCOMING: THESE DIMENSIONS SHALL BE USED FOR INCOMING LOT INSPECTION.
  - ③ STATISTICAL PROCESS CONTROL: THESE DIMENSIONS SHALL BE STATISTICALLY MONITORED BY SUPPLIER.
  - ④ SUPPLIER QUALITY: THESE DIMENSIONS SHALL BE MONITORED AS SPECIFIED IN THE SUPPLIER QUALITY PLAN.
3. MATERIAL: ALUMINUM EXTRUSION 6063-T5 OR 6060-T5.
4. PART SHALL BE FREE FROM EXPOSED SHARP EDGES AND BURRS.
5. THE DELL COMPUTER CORPORATION PART NUMBER (P/N 2H046) WITH SUPPLIER'S SYMBOL OR LOGO TO WHICH PART WAS PRODUCED SHALL BE MARKED IN A PERMANENT AND LEGIBLE MANNER, LOCATED APPROXIMATELY WHERE SHOWN USING .12 [3.0] HEIGHT CHARACTERS MIN.
6. PART SHALL CONFORM TO ITEM NO. 1 AND 2. ALL SURFACES SHALL BE CLASS 4.
7. SURFACE INDICATED SHALL BE FLAT WITHIN STATED LIMITS:
  - .003 [0.08] CONCAVE MAX.
  - .003 [0.08] CONVEX MAX.
  - THE REMAINING AREA SHALL BE .004 [0.10].
8. THE DELL APPROVED SERIAL/DATE CODE TO WHICH PART WAS PRODUCED SHALL BE MARKED IN A PERMANENT AND LEGIBLE MANNER, USING .12 [3.0] HEIGHT CHARACTERS MIN.



SCALE 2/1



DETAIL A  
SCALE 10/1

SEE DETAIL A

**RELEASE**

正式發行圖面

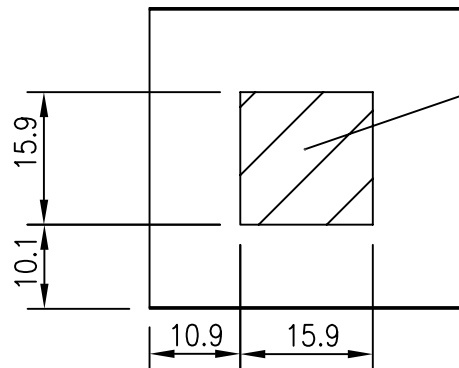
REV: A00

ENG.

APPR.

REVISIONS

REV	DESCRIPTION	BY	DATE
△	PRIMARYLY	ANDY	12/30/04
△	RELEASE	ANDY	12/30/04



MATERIAL ①		超眾科技股份有限公司 CHAUN-CHOUNG TECHNOLOGY CORP.		MODEL NO.	
SURFACE TREATMENT CLEAR ANODIZED		S		PART NO. 3351817301A	
TOLERANCES UNLESS NOTED		mm 0 25 THIRD ANGLE PROJECTION		DWG. NO :	
LINEAR ±	③	Metric A4		TITLE HTSNK,CSTM,CHIP,LO-PWR	
ANGLES ±		SCALE 1/1 SHEET 1 OF 1		DESIGNER	ANDY 12/30/04
				CHECKED	
				APPROVED	

5

4

3

2

1

D

D

C

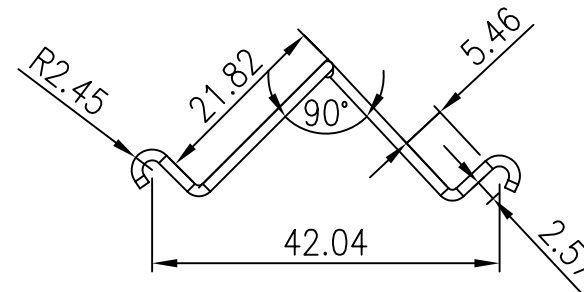
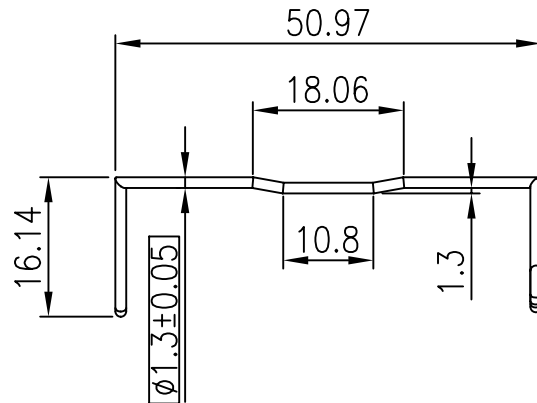
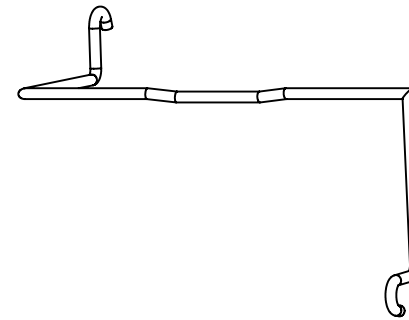
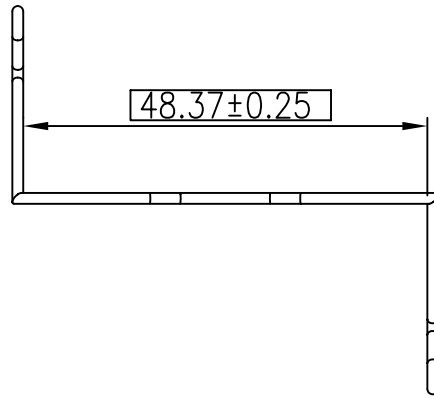
C

B

B

A

A



NOTE:

- ① MATERIAL: SUS 304  $\phi 1.3$  HARD SST WIRE
  - ② PART SHALL BE DEGREASED, WASHED AND FREE OF OIL AND/OR DIRT MARKS.
  - 3. INSIDE BEND RADIL TO BE .055 (1.40) UNLESS NOTED D THERWISE.
  - 4. ANY MATERIALS TO BE USED FOR THIS PART COMPLY WITH GREEN PROCUREMENT STANDARD
  - ⑤ TOLERANCE:  
UNLESS OTHERWISE SPECIFIED
- |          |            |
|----------|------------|
| 0-6      | $\pm 0.1$  |
| >6-25    | $\pm 0.15$ |
| >25-80   | $\pm 0.2$  |
| >80-180  | $\pm 0.3$  |
| >180-315 | $\pm 0.6$  |
| >315-    | $\pm 1.0$  |
| ANGLE    | $\pm 0.5$  |

RELEASE		
正式發行圖面		REV:A00
ENG.		APPR

REVISIONS	DATE	11/16/05
	BY	JOJO
	DESCRIPTION	RELEASE
REV	A00	

MATERIAL	①	超眾科技股份有限公司 CHAUN-CHOUNG TECHNOLOGY CORP.	MODEL NO. 334C887501A
SURFACE FINISH	②	SI Metric	PART NO.
TOLERANCES UNLESS NOTED		A4	DWG. NO.
LINEAR $\pm$	⑤		TITLE
ANGLES $\pm$	⑤	SCALE 1/1	WIRECLIP
		SHEET 1 OF 1	DESIGNER JOJO 11/16/05
			CHECKED P.C 11/16/05

5

4

3

2

1

D

D

C

C

B

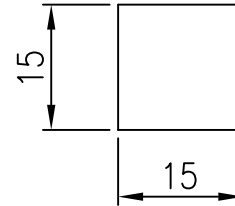
B

A

A

NOTE:

- ① MATERIAL:CHOMERICS T725 (t=0.13 mm)
- ② FINISH:FREE OF RESIDUE



REVISIONS		
REV	DESCRIPTION	DATE
A00	RELEASE	11/16/05
A01	MODIFY MATERIAL	06/07'06

RELEASE		
正式發行圖面		REV:A01
ENG.		APPR

MATERIAL		超眾科技股份有限公司 CHAUN-CHOUNG TECHNOLOGY CORP.		MODEL NO.	
SURFACE FINISH 		 THIRD ANGLE PROJECTION 		PART NO. 333C887501A	
				DWG. NO.	
TOLERANCES UNLESS NOTED		A4 SCALE 1/1 SHEET 1 OF 1		TITLE	
LINEAR ±				THERMAL INTERFACE	
ANGLES ±				DESIGNER	JOJO
		CHECKED	P.C	06/07'06	

5

4

3

2

1