

Frontpanel Switch / Momentary Action, Medium Stroke, 10 mm



Description

- Available in version square or round in different colours
- non-illuminated or illuminated
- 1- or 2-pole
- Frontpanel and PCB Mounting
- Solder, THT or solder lugs

Unique Selling Proposition

- Absolute reliability and simple assembly
- Compact design with very small mounting depth
- Good illumination

Weblinks

[html-datasheet](#), [General Product Information](#), [CE declaration of conformity](#), [RoHS](#), [CHINA-RoHS](#), [CAD-Drawings](#), [Product News](#), [Detailed request for product](#)

Technical Data

Electrical Data

Switching Voltage	min. 100 mVAC/DC , max. 60 VAC / 50 VDC
Switching Current	max. 200 mA
Lifetime	> 100'000 actuations at Rated Switching Capacity 1.2 W
Contact Resistance	< 20mΩ < 25 mΩ after lifetime
Insulation Resistance	> 10'000 MΩ
Duration of Bounce	typ. 0.5 ms

Mechanical Data

Actuating Force	1.2 ± 0.6 N
Actuating Travel	1.3 ± 0.5 mm
End Actuating Travel	2.9 ± 0.5 mm
End Stop Strength	> 50 N
Lifetime	> 100'000 actuations

Climatical Data

Operating Temperature	illuminated -25 °C to 60 °C
	non-illuminated -25 °C to 85 °C
Storage Temperature	illuminated -25 °C to 60 °C
	non-illuminated -25 °C to 85 °C
IP-Protection	IP 40

Other Data

Solderability	235 °C / 2 sec (IEC 60068-2-20 Test Ta Method 1)
Resistance to Soldering Heat	260 °C / 5 sec (IEC 60068-2-20 Test Tb Method 1A)

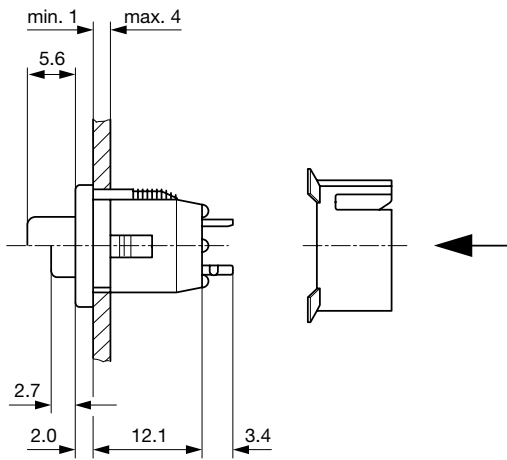
Material

Socket	Thermoplastic (PES)
Button	Thermoplastic (PC)
Contact	CuZn37 5 µm Ag
Contact spring	CuBe37 5 µm Ag
Terminals	CuZn37 4 µm SN Pb 40

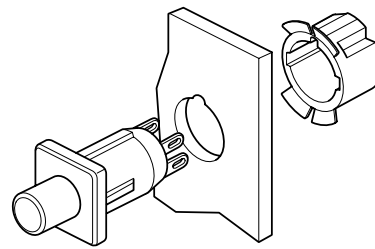
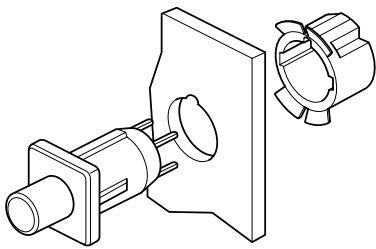
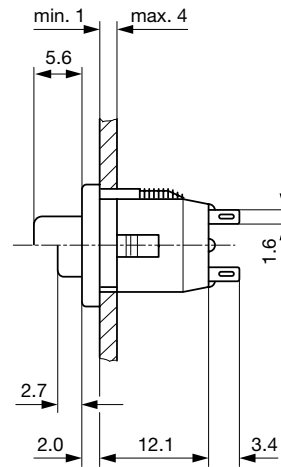
Detailed information on product approvals, code requirements, usage instructions and detailed test conditions can be looked up in [General Product Information](#)

Dimension

Small button



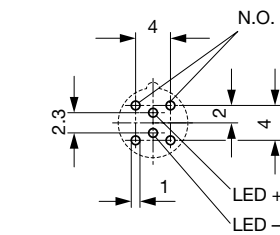
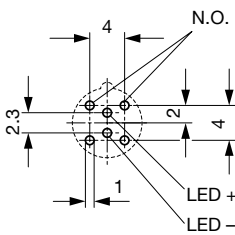
Small button with solder lugs



Small button

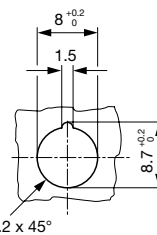
Small button with solder lugs

Dimension

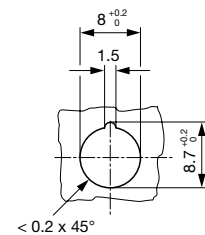


Drilling diagram / Wiring diagram

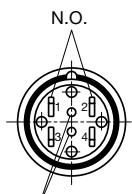
Drilling diagram / Wiring diagram



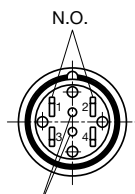
Front panel drilling



Front panel drilling



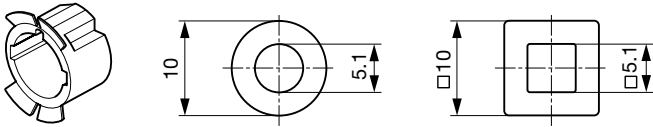
Solder lug version



Solder lug version

Assembly Instructions

Securing clip, round bezel button, square bezel button

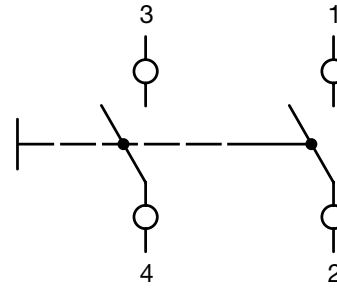
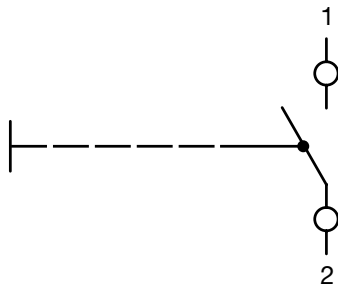


Necessary for front panel mounting

Diagrams

NO 1 pole

NO 2 pole



All Variants

Type	Number of Poles	Terminal	Form	Illumination	Color Button	Color LED	Color Bezel	Securing clip ¹⁾	Bestellnummer
Momentary Action Switch	1-pole	Solder lugs	round		red	-	black	●	0041.8841.3107
Momentary Action Switch	1-pole	Solder lugs	round		black	-	black	●	0041.8841.7107
Switches	2-pole	Solder lugs	round	●	red	red	black	●	0041.8857.3117
Switches	2-pole	Solder lugs	round	●	green	green	black	●	0041.8857.5127
Momentary Action Switch	1-pole	Solder, THT	round		red	-	black		0041.9141.3107
Momentary Action Switch	1-pole	Solder, THT	round	●	red	red	black		0041.9146.3117
Momentary Action Switch	1-pole	Solder, THT	round	●	green	green	black		0041.9146.5127
Switches	1-pole	Solder, THT	round	●	red	red	black		0041.9156.3117
Switches	1-pole	Solder, THT	round	●	green	green	black		0041.9156.5127
Securing clip	-	-	-		-	-	-		0850.9242

With the illuminated version, the small button is transparent

¹⁾Securing clip is included for solder lug version

Most Popular.

Availability for all products can be searched real-time: <http://www.schurter.com/en/Stock-Check/Stock-Check-SCHURTER>

Packaging unit 100 pcs